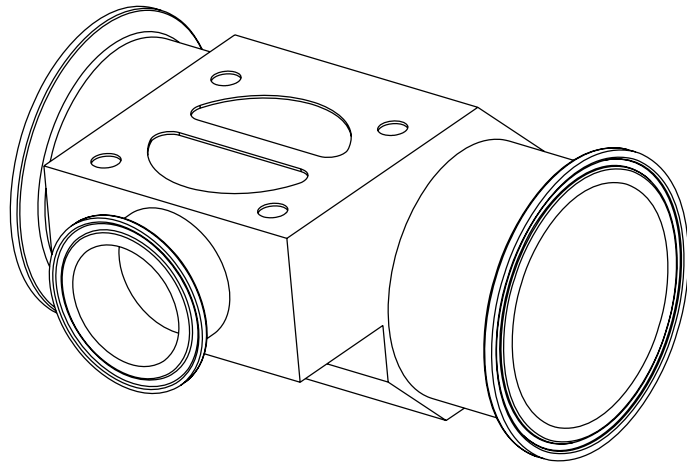
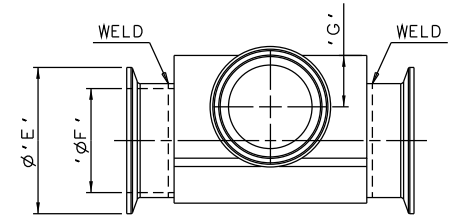
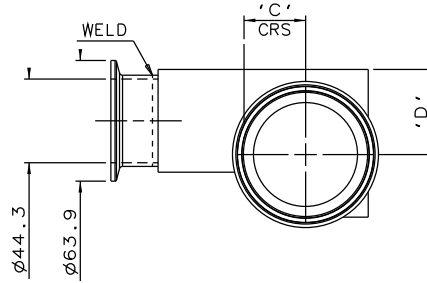
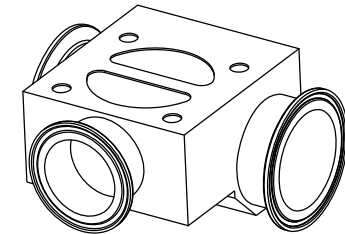
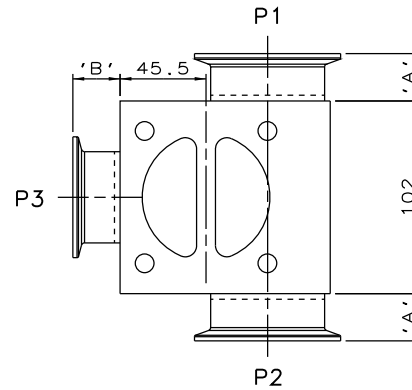


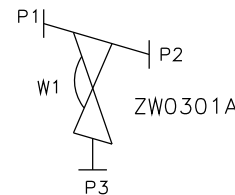
DN40 MAINLINE ONLY



DN65 TO DN100
MAINLINE ONLY



DN50 MAINLINE ONLY



ORIENTATION AS PER
P&ID DIAGRAM FOR
OPTIMUM DRAINABILITY.

| MAINLINE SIZE | A | B | C | D | ϕE | ϕF | G | BODY WEIGHT |
|---------------|------|------|------|------|----------|----------|------|-------------|
| mm | mm | mm | mm | mm | mm | mm | mm | Kgs |
| DN40 | 25.0 | 25.0 | 27.2 | 38.5 | 63.9 | 44.3 | 26.2 | 3.6 |
| DN50 | 25.0 | 25.0 | 32.6 | 45.0 | 77.4 | 55.1 | 27.2 | 3.8 |
| DN65 | 50.0 | 25.0 | 40.5 | 52.0 | 90.9 | 70.9 | 27.2 | 3.8 |
| DN80 | 50.0 | 25.0 | 46.9 | 56.0 | 105.9 | 83.7 | 27.2 | 4.2 |
| DN100 | 50.0 | 25.0 | 59.6 | 65.0 | 130.0 | 109.1 | 27.2 | 5.0 |

The information on this sheet is Private and Confidential and is the property of Crane Process Flow Technologies Limited and must not be published directly or indirectly in any manner whatsoever without the written permission of the Company and must not be used in any way detrimental to their interests.
© Crane Process Flow Technologies

CRANE Process Flow Technologies
A Crane Co. Company

Saunders
The Science Inside

Title
SCHEDULE OF LEADING DIMENSIONS FOR DN40
WEIR 'T' BODY COMPLETE WITH :
MAINLINE : HYGIENIC CLAMP ENDS WITH ISO 1127 S1 BORE
BRANCH : DN40 HYGIENIC CLAMP END WITH ISO 1127 S1 BORE

Drawn R1 Date 07.02.12

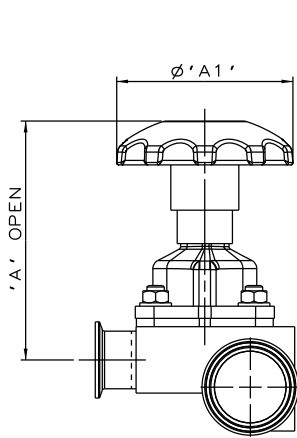
Checked RND Date 23.03.12

First Angle Projection Method E

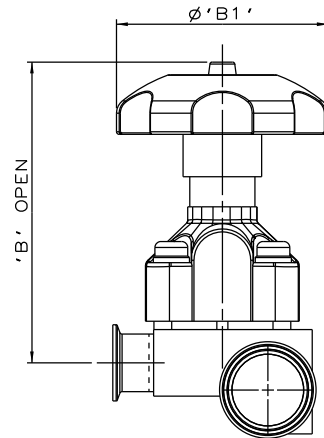
UNCONTROLLED IN
HARD COPY FORMAT

Drawing No.
WEB-125 Issue.
1

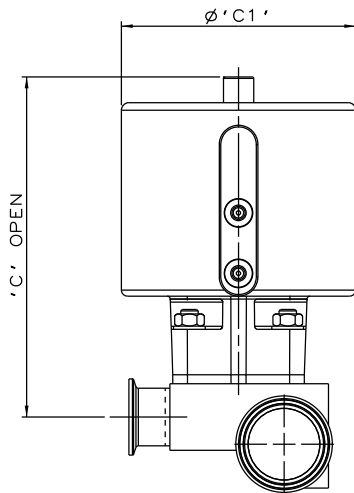
DO NOT SCALE



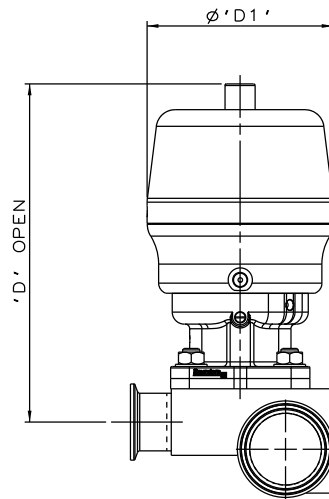
SS NON SEALED
BONNET ASSEMBLY



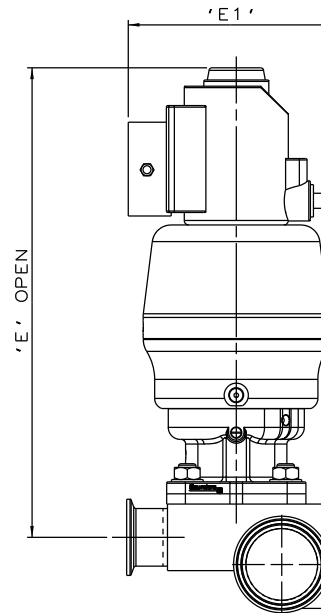
PES BONNET
ASSEMBLY



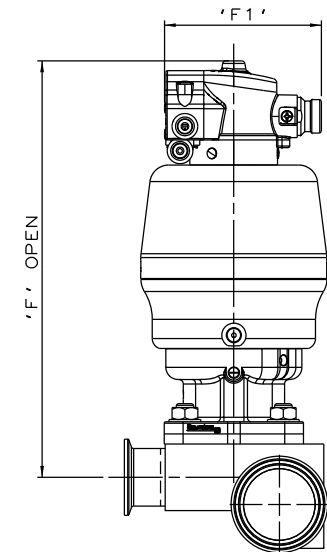
EC ACTUATOR
(ALL MODES)



*S360 ACTUATOR



*S360 ACTUATOR
WITH I-VUE SENSOR



*S360 ACTUATOR
WITH M-VUE SENSOR

*DIMENSIONS SHOW MAXIMUM ENVELOPE FOR ALL MODES

| BRANCH SIZE | | A | | A1 | | B | | B1 | | C | | C1 | | D | | D1 | | E | | E1 | | F | | F1 | |
|-------------|------|-------|------|-------|------|-------|------|-------|------|-------|------|-------|------|-------|------|-------|------|-------|-------|-------|------|-------|-------|-------|------|
| mm | inch | mm | inch | mm | inch | mm | inch | mm | inch | mm | inch | mm | inch | mm | inch | mm | inch | mm | inch | mm | inch | mm | inch | mm | inch |
| DN40 | 1.50 | 163.2 | 6.43 | 120.0 | 4.72 | 204.2 | 8.04 | 140.0 | 5.51 | 230.2 | 9.06 | 155.0 | 6.10 | 229.2 | 9.02 | 123.0 | 4.84 | 316.2 | 12.45 | 136.0 | 5.35 | 280.2 | 11.03 | 103.8 | 4.09 |

The information on this sheet is Private and Confidential and is the property of Crane Process Flow Technologies Limited and must not be published directly or indirectly in any manner whatsoever without the written permission of the Company and must not be used in any way detrimental to their interests.
© Crane Process Flow Technologies

CRANE Process Flow Technologies
A Crane Co. Company

Saunders
The Science Inside

Title
SCHEDULE OF LEADING DIMENSIONS FOR DN40/1.50
WEIR 'T' BODY WITH
HYGIENIC CLAMP ENDS WITH ISO 1127 S1 BORE.
FITTED WITH TOPWORKS OPTIONS

Drawn RI Date 09.05.17

Checked RND Date 09.05.17

UNCONTROLLED IN
HARD COPY FORMAT

First Angle
Projection
Method E

DO
NOT
SCALE

Drawing No.
WEB-125-ASSY

Issue.
1